

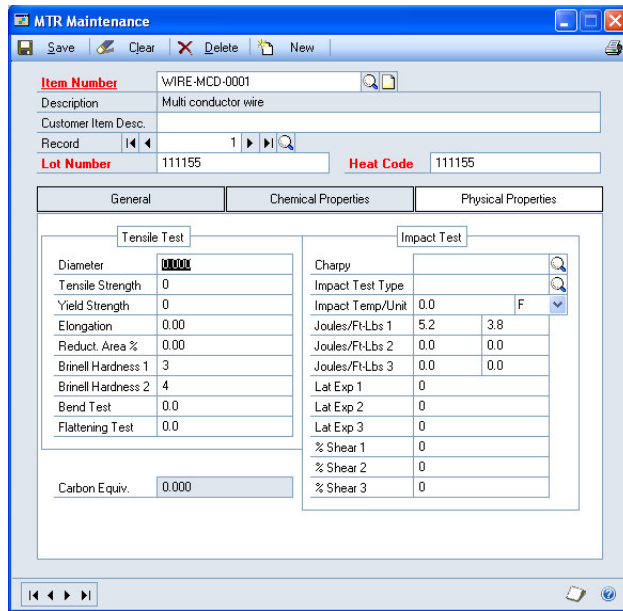
MTR Maintenance

MTR attaches material properties to a Lot Number in GP. It allows creation of multiple Heat Codes associated with a single lot number, which is useful if a material is re-tested so that a new set of properties can be associated with the Lot without losing the original properties.

The screenshot shows the 'MTR Maintenance' window with the 'General' and 'Physical Properties' tabs selected. The 'General' tab contains fields for Engineering Spec (PT-103), Material Spec (I), Heat Treatment (ABSDF), Heat Temp (74.4 C), Cooling Type (AIR), and Conformance Type (PT-101023.332). The 'Physical Properties' tab shows Date (0/0/0000) and Quantity (0.00). The top of the window displays Item Number (WIRE-MCD-0001), Lot Number (111155), and Heat Code (111155).

The screenshot shows the 'MTR Maintenance' window with the 'Chemical Properties' tab selected. This tab displays a table of chemical elements and their corresponding values. The elements listed are C, Si, Mn, P, S, Cr, Cu, Ni, Mo, V, Cb, A, B, Ca, Fe, N, T, and Ti. The values for C, Si, Mn, P, S, Cr, Cu, Ni, Mo, V, Cb, A, B, Ca, Fe, N, T, and Ti are all 0.000. The value for C is displayed as 0.0000.

C	0.0000	A	0.000
Si	0.000	B	0.000
Mn	0.000	Ca	0.000
P	0.000	Fe	0.000
S	0.000	N	0.000
Cr	0.000	T	0.000
Cu	0.000	Ti	0.000
Ni	0.000		
Mo	0.000		
V	0.000		
Cb	0.000		



MTR Query allows the end-user to build complex, multi-part queries to locate material in inventory that meets a customer's specification requirements.

