



SOFTWARE FOR MANUFACTURING & DISTRIBUTION

MICROSOFT DYNAMICS GP™

BUSINESS SOFTWARE DEVELOPMENT

leanMFG

LeanMFG is a complete manufacturing suite for Dynamics GP specifically designed for smaller manufacturers, and those whose processes include disassembly, batch, and multi-product production. Targeted for the Business Essentials customer, LeanMFG provides flexibility and ease-of-use which appeals to all users. It does not require Dynamics GP Manufacturing, and can be used alongside it to provide disassembly.

Lean MFG includes:

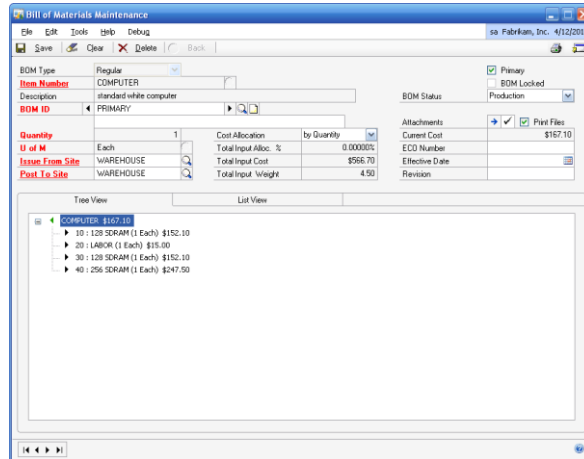
- Bill of Materials
The Bill of Materials supports Regular, Phantom, Reverse, Disassembly, Batch and Multi-Product bills of material. The BOM was designed to comply with the guidelines of the National Electronics Manufacturing Initiative (NEMI) Perfect BOM Team
- Electronic Router
supports detailed work instructions, and electronic capture of in-process data entry
- Manufacturing Order
supports easy, on-the-fly changes to consumed materials
- Extended Lot Attributes

Bill of Materials Maintenance

The LeanMFG BOM supports a multi-level standard and phantom bill. Additionally, the Reverse and Disassembly Bills allow deconstructing a starting material into its component parts.

The Batch Bill, shown above, allows creating a formula bill where the component quantities are calculated in relationship to a specified Batch Quantity.

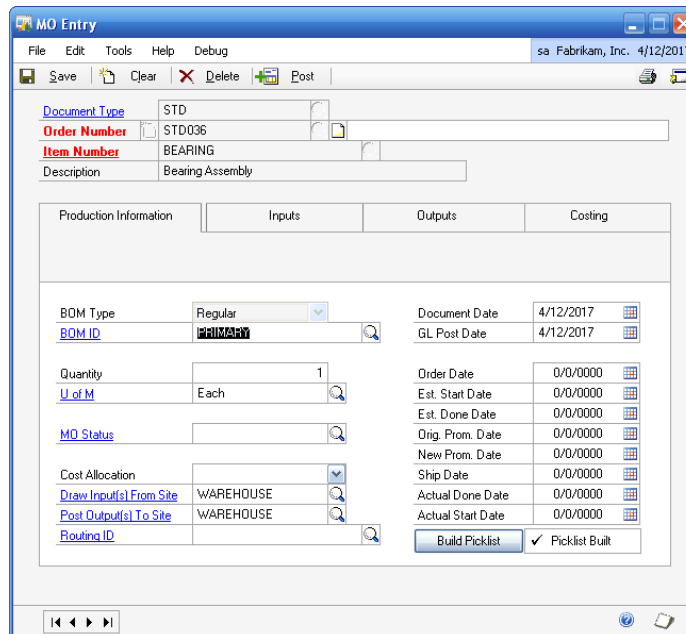
The Multi-Product bill supports multiple inputs and outputs on a single work order.



Bill of Materials support Regular, Disassembly, and multi-product bills.

Manufacturing Order Entry

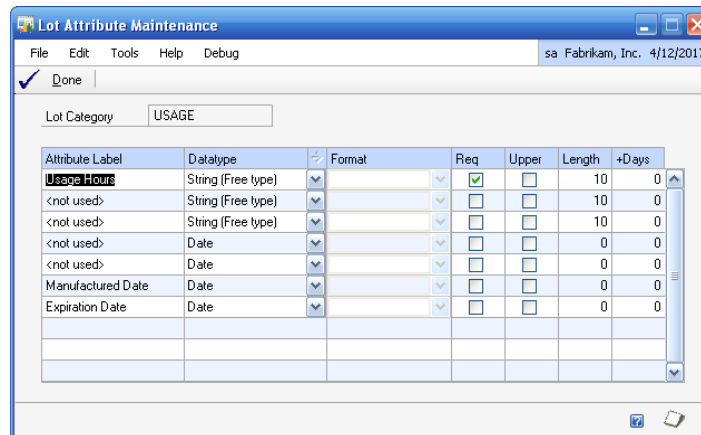
The MO Entry window clearly displays inputs and outputs, and allows the user to quickly add additional materials as needed. Create new manufacturing orders based on existing BOMs, or create a Manual MO by adding items on-the-fly. Create regular assembly orders, or disassembly, multi-product, or reverse orders.



MO Entry Product Information view

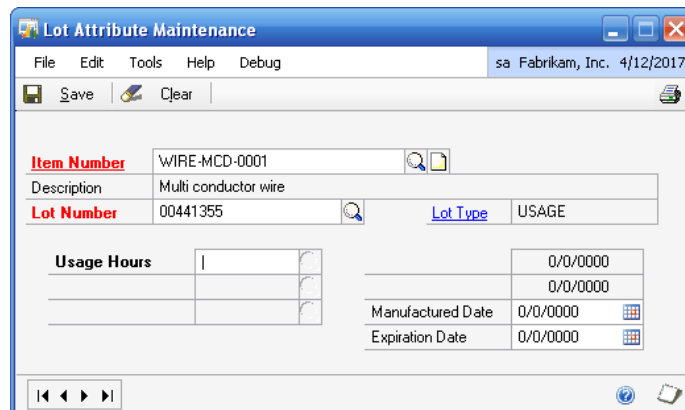
Extended Lot Attributes

Extended Lot Attributes (ELA) provide the ability to create an unlimited number of user-defined Lot Attributes. ELA can be licensed alone, without LeanMFG. With ELA you can set Lot Attributes as required, turn an attribute into a Lookup field, automatically calculate Expiration Date based on Manufactured Date, and more.



Lot Attribute Maintenance setting a Required Attribute

And new Item Lot Attribute Maintenance window allows editing Lot Attributes on existing Lot Numbers.



Editing Attributes on existing Lot Number